



## UScale X1911 Unified Gateway

UScale X1911 is a small capacity core voice gateway for unified communication solutions, with various IP terminals.

The X1911 adopts a broadband and narrowband integrated design with high integration. It can connect to carrier networks or private network voice switching equipment through digital, analog and SIP trunks, and supports mixed access of analog and IP phones.

The X1911 is modular, and the single board supports hot-swapping.

## Feature

### Highly integrated and business-rich

- Provide rich voice over IP service capability
- Built-in voice conferencing, supporting a variety of meeting methods
- Support One Call service to receive important calls at any time and any place
- Built-in voicemail service, so you don't miss any calls
- Support for Unified Communications application extensions

## Product



### Effective control and cost saving

- Number analysis and black and white lists for precise call range control
- 32 levels of custom permissions for multi-level enterprise control
- Intelligent routing to reduce enterprise communication costs

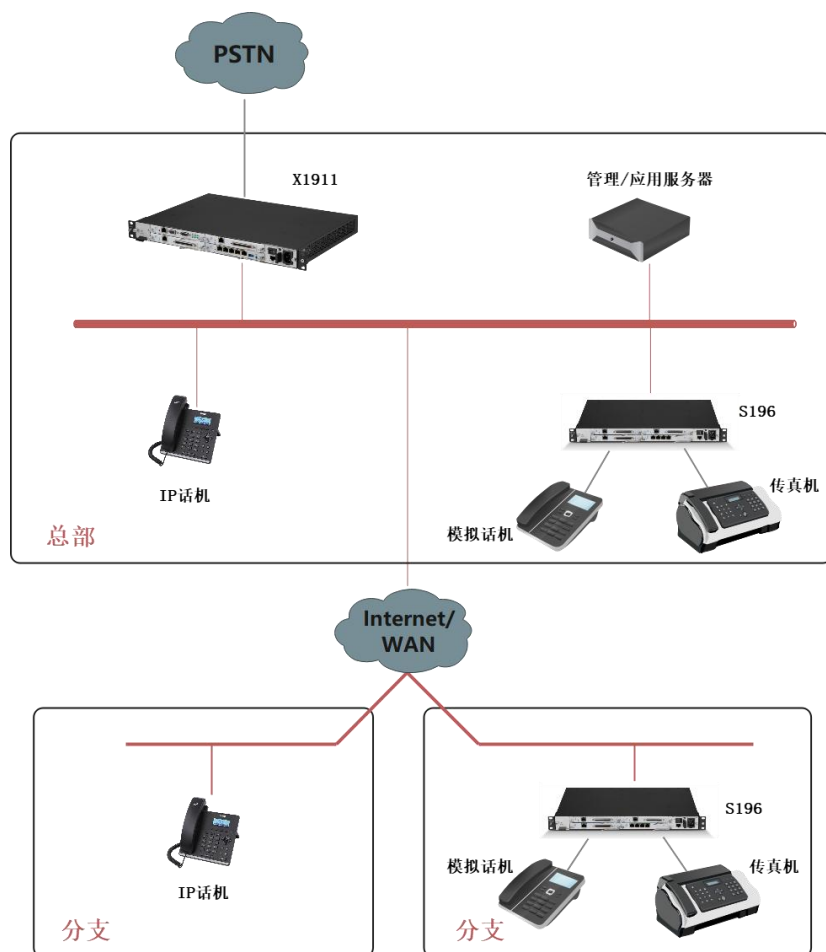
### Flexible deployment and easy maintenance

- One hour rapid deployment
- Unified network management, efficient maintenance
- Built-in web management interface, easy to operate

# Application

The X1911 is a small capacity device in the UScale family of voice gateways, suitable for medium and small voice communication applications without branches or with small branches (small branches can deploy IADs or IP phones).

- ◆ IPT application scenarios can be interconnected with carrier networks through broadband/narrowband trunks to provide rich voice functions. At this time, SIP phones can be accessed directly; analog phones and fax machines can be accessed directly or indirectly through S devices.



- ◆ The UC application scenario can realize status presentation, instant messaging, multimedia conferencing and other UC services by deploying enhanced communication suite at the same time to enrich communication channels and improve communication efficiency.

# X1911 Specification

Parameters	Functions and Features
User Capacity	300 (max 300 IP users / 96 local analog users)
Terminal Type	Analog Phones, IP Phones, Video Phones, Soft Terminals
Relay interface	Max.36 FXO, Max.12 E1/T1 interfaces
Signaling protocols	SS7, R2, PRI, QSIG, SIP
Codec format	G.711a/u, G.729, G.729a, G.729b, G.729ab, iLBC, G.722, G.722.1, G.722.2
Number of conference channels	Maximum 60 participants, maximum 20 meeting rooms, maximum 60 participants in a single venue
Voicemail	Supports up to 12 concurrent channels of built-in voicemail Supports internal recording SSD hard drive
Power supply	AC:100V~240V; 50Hz/60Hz
Power consumption	150W (fully equipped)
Size	Standard 19-inch 1U frame 440mm×316.6mm×44mm
Weight	6kg (full complement)
Environmental indicators	Temperature: Storage temperature: -40°C~70°C Long-term working temperature: 0°C~45°C Short-term working temperature: -5°C~55°C Humidity: Operating humidity: 5% to 95% RH, no condensation Dustproof: the working environment should be dustproof, the concentration of particles in the air is less than 180 mg/m <sup>3</sup>
System reliability	>=99.995%
Maintainability	Support centralized or remote device management, log management, resource management, alarm management







## UScale X1960 Unified Gateway

UScale X1960 is a core voice switching equipment for enterprises with less than 1,000 users, providing professional IP voice solutions and unified communication solutions.

The X1960 adopts a broadband-narrowband integrated design with a high degree of integration. It can connect to carrier networks or private network voice switching equipment through digital, analog and SIP trunks, and supports mixed access of analog and IP phones.

The X1960 is modular, easy to install, and the single board supports hot-swapping.

## Feature

### Efficient contact to seize business opportunities

- Provide rich voice over IP service capability
- Built-in high-fidelity voice conferencing, supporting a variety of meeting methods
- Support One Call service, answer calls at any time and place
- Built-in voicemail service, so you don't miss any calls
- Support for Unified Communications application expansion

## Product



### Effective control and cost saving

- Number analysis and black and white lists for precise call range control
- 32 levels of custom permissions for multi-level enterprise control
- Intelligent routing to reduce enterprise communication costs

### Flexible deployment and easy maintenance

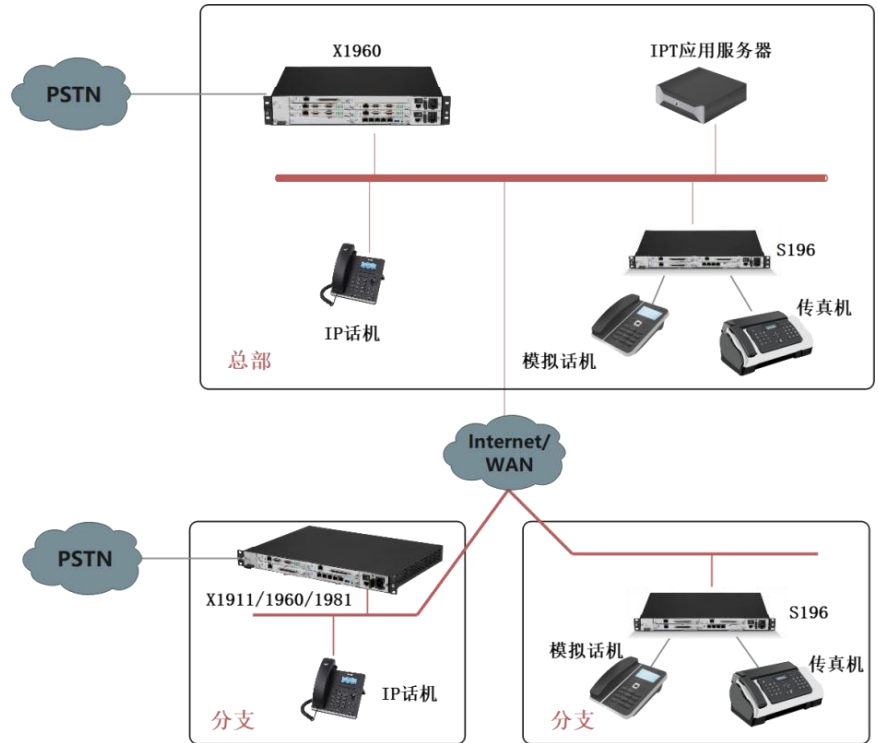
- One hour rapid deployment
- Unified network management, efficient maintenance
- Built-in web management interface, easy to operate

# Application

X1960 is a small and medium capacity device of UScale series voice gateway, which supports dual deployment or offsite disaster recovery and is suitable for medium and small size without branch nodes as well as medium and large size voice communication applications with branches, providing rich voice services.

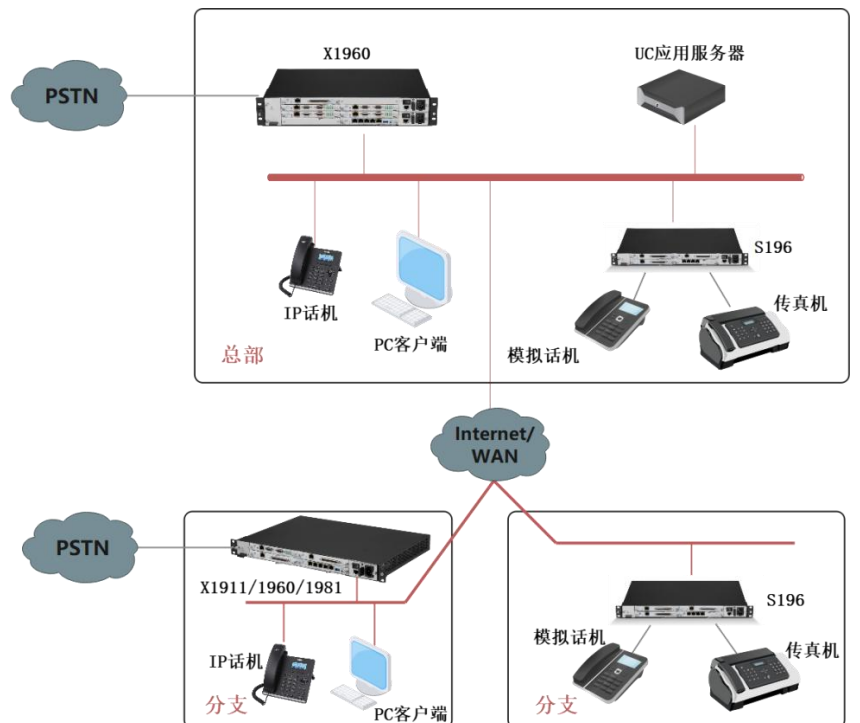
## IPT Application Scenarios

X1960 is used as the core voice gateway to provide call control service for the whole network users. Branch nodes can choose X1900 series gateway to realize local voice access according to user requirements. SIP phones can be accessed directly, and analog phones and faxes can be accessed through S devices. By configuring wide/narrowband trunking, X1960 can interoperate with internal users and external users such as mobile and fixed line.



## UC Application Scenarios

On the basis of IPT application networking, by adding UC application server (enhanced communication suite), you can realize status presentation, instant messaging, multimedia conference and other UC business applications to enrich communication channels and improve communication efficiency.



# X1960 Specification

Parameters	Functions and Features
User Capacity	1,000 (max 1,000 IP users / 224 local simulated users)
Terminal Type	Analog Phones, IP Phones, Video Phones, Soft Terminals
Relay interface	Max. 84 FXO, Max. 28 E1/T1 interfaces
Signaling protocols	SS7, R2, PRI, QSIG, SIP
Codec format	g.711a/u, g.729a/b/ab, iLBC, g.722/g.722.1/g.722.2
Number of conference channels	Max. 360 participants, max. 120 meeting rooms, max. 60 participants in a single room
Voicemail	Supports up to 30 concurrent channels of built-in voicemail Support built-in SSD dedicated recording hard disk
Power supply	AC:100V~240V; 50Hz/60Hz Support dual power modules, 1+1 backup
Power consumption	250W (fully equipped)
Size	Standard 19-inch 2U frame 440mm×316.6mm×86mm
Weight	10kg (full complement)
Environmental indicators	Temperature: Storage temperature: -40°C~70°C Long-term working temperature: 0°C~45°C Short-term working temperature: -5°C~55°C Humidity: Operating humidity: 5% to 95% RH, no condensation Dustproof: the working environment should be dustproof, the concentration of particles in the air is less than 180 mg/m <sup>3</sup>
System reliability	>=99.995%
Maintainability	Support centralized or remote device management, log management, resource management, alarm management







## UScale X1981 Unified Gateway

### Product

UScale X1981 is a core voice gateway, providing professional IP voice solutions and unified communication solutions.

X1981 adopts the integrated design of broadband and narrowband, with high integration and supports 20,000 users in a single frame.

X1981 is modular in function, easy to install, and the single board supports hot-swapping.



### Feature

#### Highly integrated and feature-rich

- Provide rich voice over IP service capability
- Built-in high-fidelity voice conferencing, supporting a variety of meeting methods
- Support One Call service, answer calls at any time and place
- Built-in voicemail service, so you don't miss any calls

#### High stability, high reliability

- 99.999% carrier-grade reliability
- Redundant backup of key modules

#### Effective control and cost saving

- Number analysis and black and white lists for precise call range control
- 32 levels of custom permissions for multi-level enterprise control
- Intelligent routing to reduce enterprise communication costs

#### Rapid deployment and easy maintenance

- One hour rapid deployment
- Unified network management, efficient maintenance
- Built-in web management interface, easy to operate

# Application

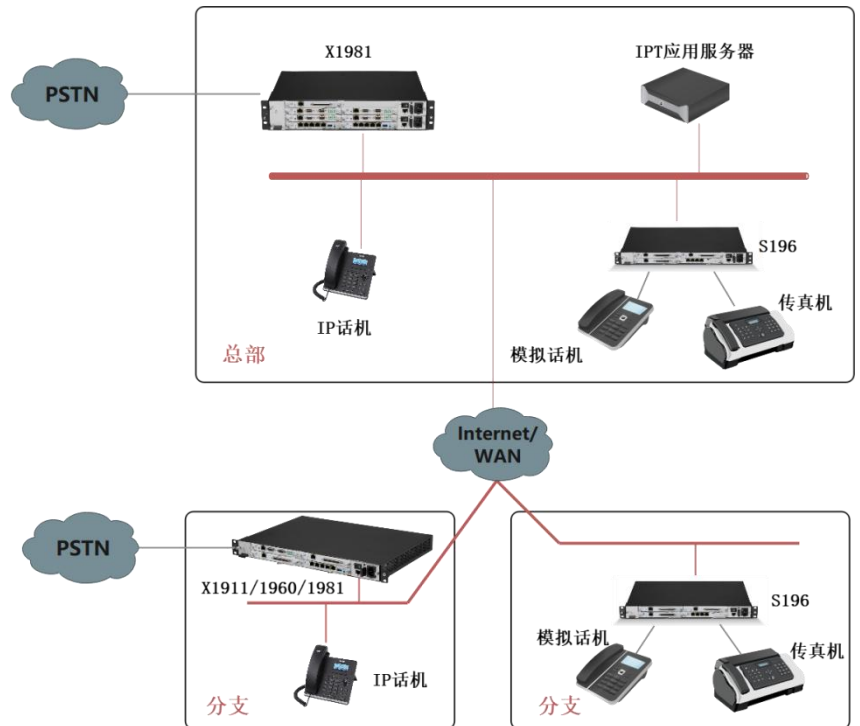
X1981 is a high-capacity device of UScale series voice gateway with carrier-grade reliability, supporting dual deployment or off-site disaster recovery, suitable for large-scale voice communication applications and providing rich voice services.

Suitable for medium and small voice communication applications without branches or with small branches (small branches can be deployed with IAD or IP phones).

## IPT Application Scenarios

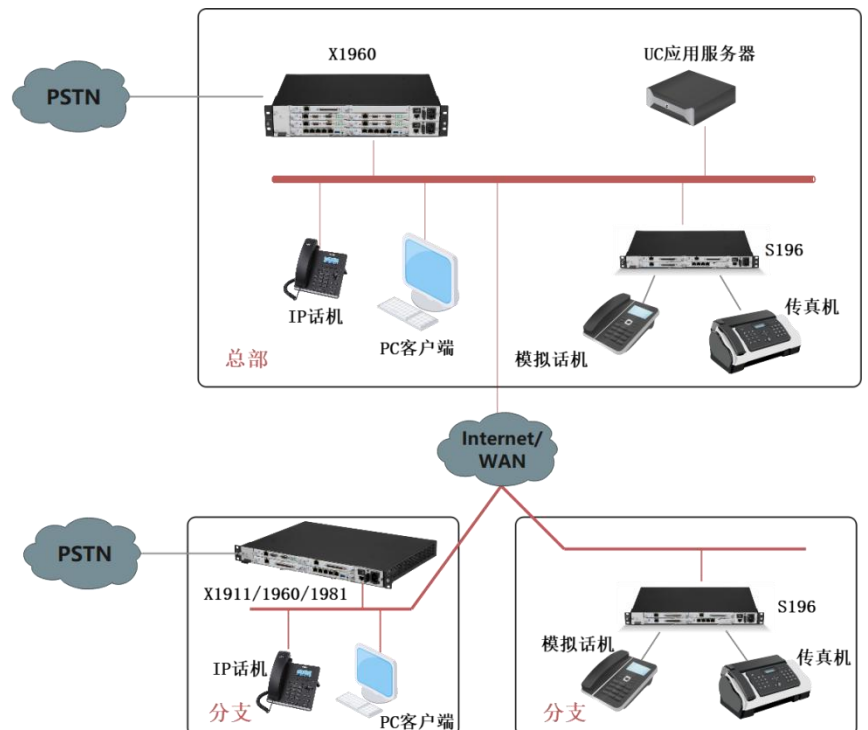
X1981 is used as the core voice gateway to provide call control service for the whole network users. Branch nodes can choose one X1900 series gateway to achieve local voice access according to user requirements.

SIP phones can be accessed directly, and analog phones and faxes are accessed through S devices. By configuring wide/narrowband trunks, X1981 can interoperate with internal users and external users such as mobile and fixed line.



## UC Application Scenarios

On the basis of IPT application networking, by adding UC application server (enhanced communication suite), UC service applications such as status presentation, instant messaging and multimedia conference can be realized to enrich communication channels and improve communication efficiency. In this scenario, X1981 is used as the core voice gateway.





# X1981 Specification

Parameters	Functions and Features
User Capacity	20,000 (max 20,000 IP users/192 local analog users)
Terminal Type	Analog Phones, IP Phones, Video Phones, Soft Terminals
Relay interface	Max. 72 FXO, Max. 24 E1/T1 interfaces
Signaling protocols	SS7, R2, PRI, QSIG, SIP
Codec format	g.711a/u, g.729a/b/ab, iLBC, g.722/g.722.1/g.722.2
Number of conference channels	Up to 2,000 participants, up to 660 meeting rooms, up to 360 participants in a single room
Voicemail	Supports up to 30 concurrent channels of built-in voicemail / Supports internal recording SSD hard drive
Power supply	AC:100V~240V, 50Hz/60Hz Support dual power modules, 1+1 backup
Power consumption	250W (fully equipped)
Size	Standard 19-inch 2U frame 440mm×316.6mm×86mm
Weight	10kg (full complement)
Environmental Indicators	Temperature: Storage temperature: -40°C~70°C Long-term working temperature: 0°C~45°C Short-term working temperature: -5°C~55°C Humidity: Operating humidity: 5% to 95% RH, no condensation Dustproof: the working environment should be dustproof, the concentration of particles in the air is less than 180 mg/m <sup>3</sup>
System reliability	>=99.995%, average time between failures 30 years
Maintainability	Support centralized/remote device management, log management, resource management, alarm management



## X-Series Comparison

	X1911	X1960	X1981
Chassis	1U	2U	2U
Number of users	300	1,000	20,000
E1/T1	4×3	4×7	4×6
FXO	12×3	12×7	12×6
FXS	32×3	32×7	32×6
Conference	60	360	360
Recording	30	60	60
G.711	100	420	2000
Dual Master Control	--	--	Support
Dual power supply	--	Support	Support

## Ordering

<b>Complete machine frame</b>	UScale X1981 AC mainframe (with 1×SCU, 1×MTU)
-------------------------------	---

<b>Interface Boards and Power Modules</b>	Analog user interface board (32FXS with 10m user cable)
	Analog subscriber and analog trunk interface boards (12FXO & 12FXS with 10m subscriber cable)
	E1 interface board (4E1 with interface cable)
	SSD Recording Hard Drive
	UScale X1981 Switching and Main Control Board
	AC power supply module (100V to 240V; 50Hz/60Hz)
	Cooling Fan Board