

M35 GSM Module Flash Guide

Warning:

There are 2 versions of M35 module, M35 and M35F. They do NOT share same firmware!

M35: M35AR02A02.zip M35F: M35FAR01A08.zip

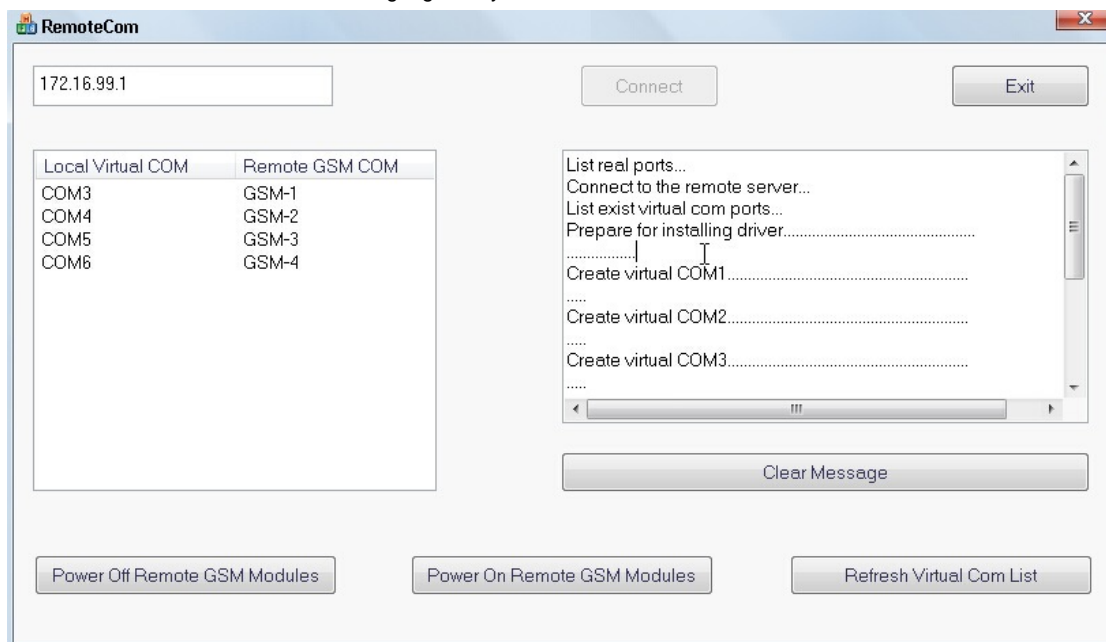
You can use AT command "AT+CGMR" to check the version! Go to step 6 for checking version!

Now we start to flash firmware for M35 gsm module.

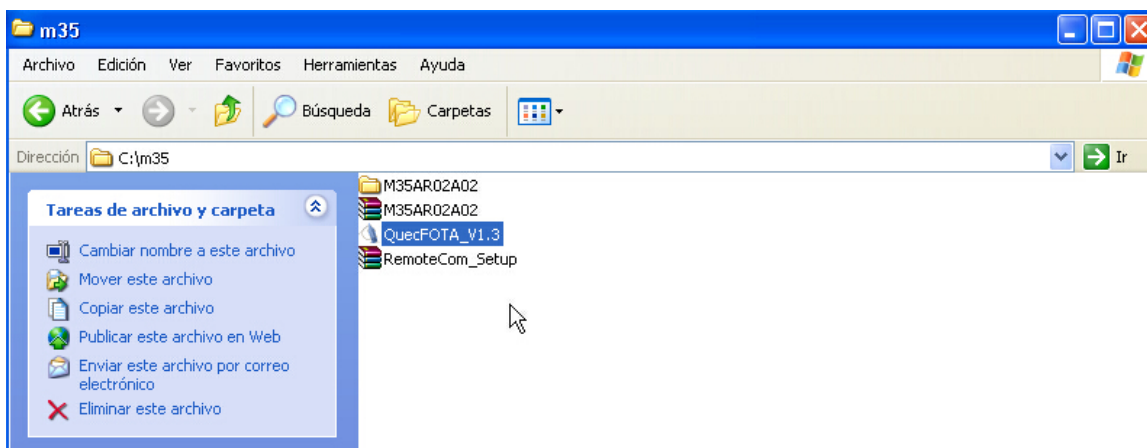
1. Open web browser to enable Remote COM:

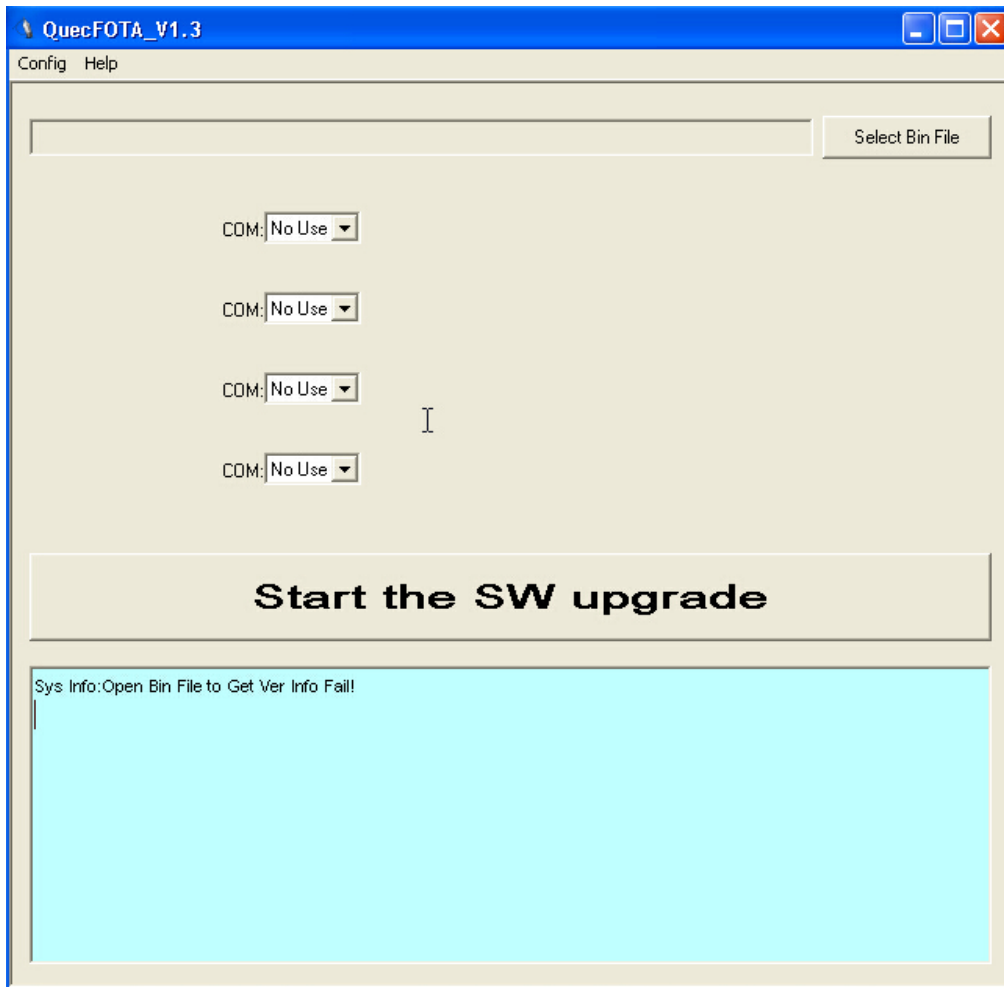


Then start RemoteCom to connect the target gateway:

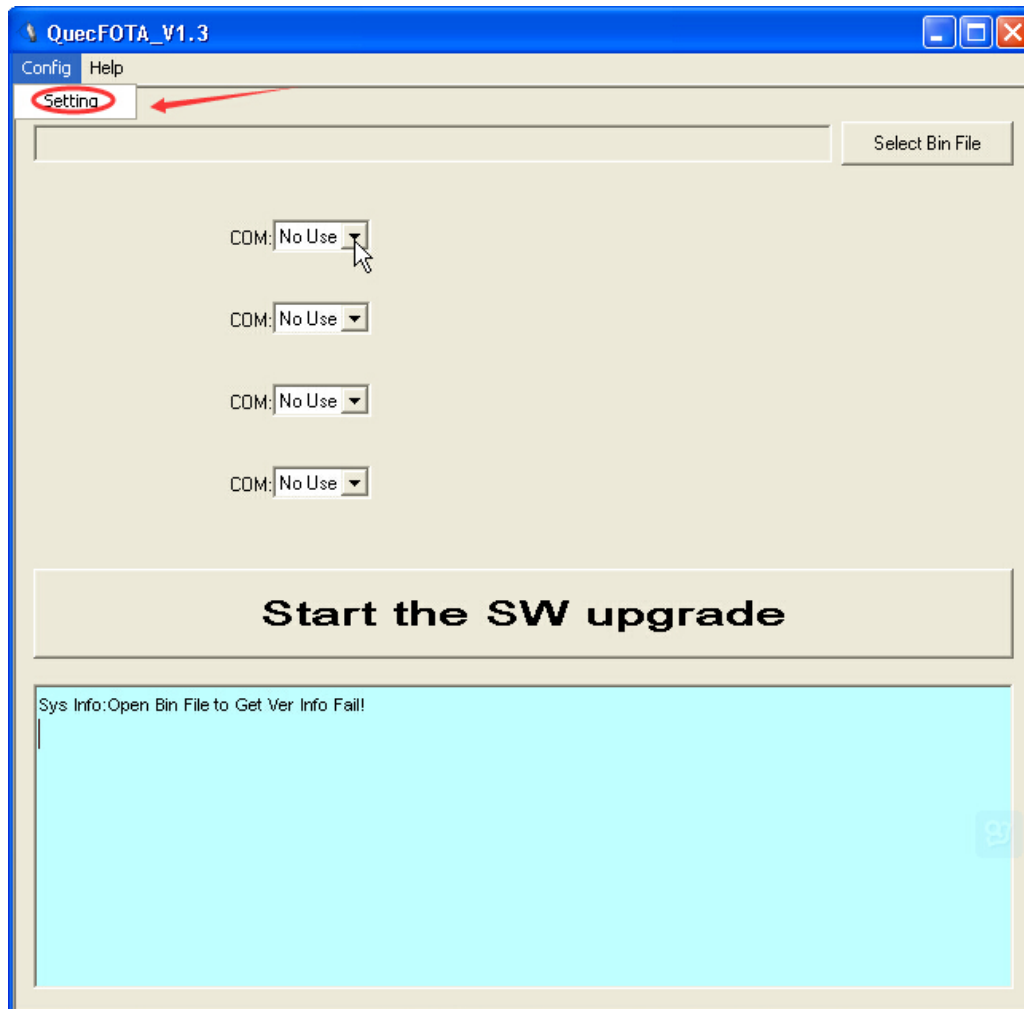


2. Run QuecFOTA_V1.3 flash tool:

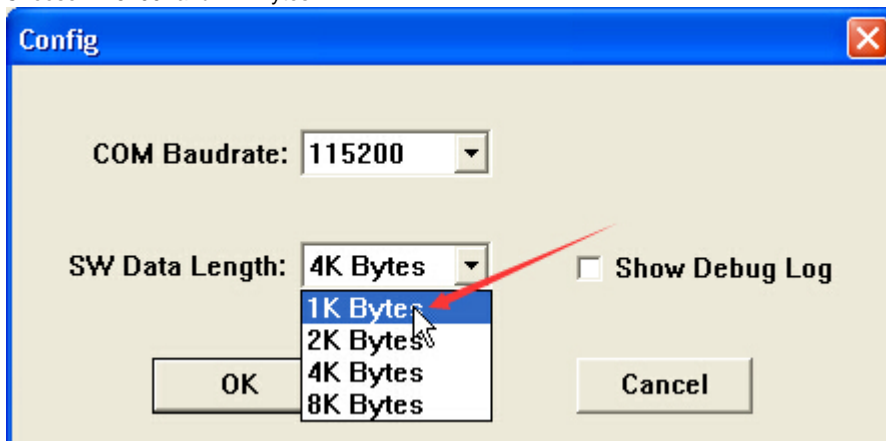




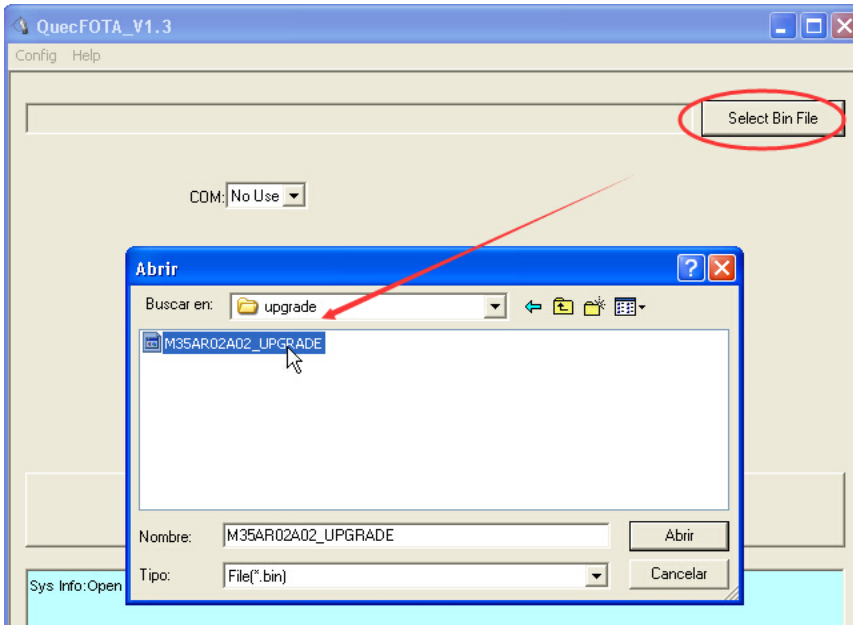
3. Click "Config", you will see the setting window:



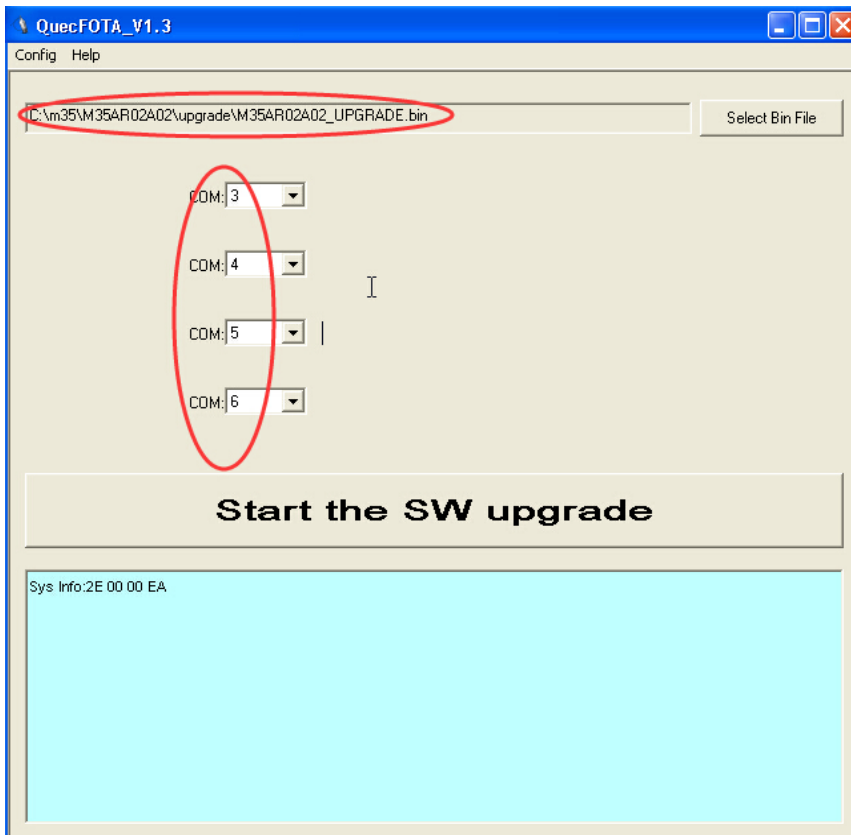
Choose "115200" and "1K Bytes":



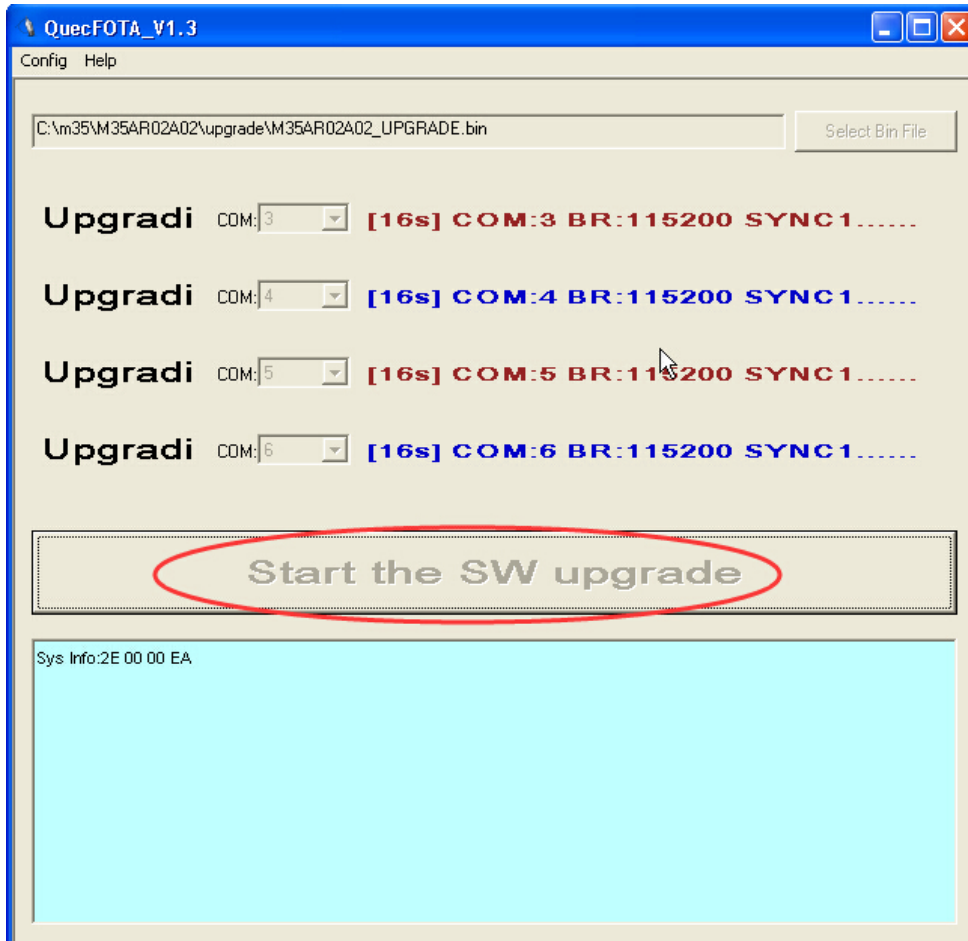
Select the right firmware bin file:



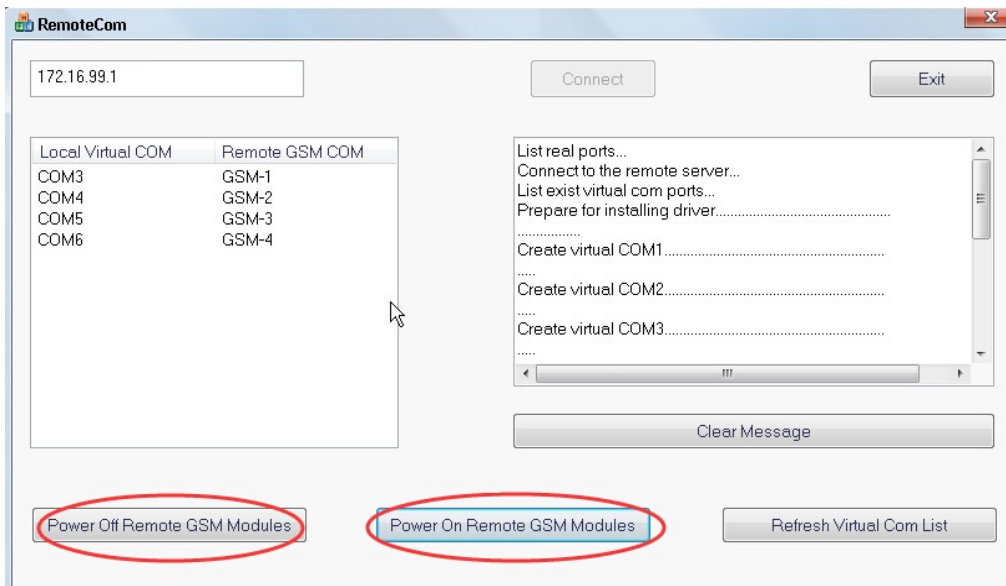
Choose Virtual COM 3,4,5,6 above corresponds to GSM port 1,2,3,4:



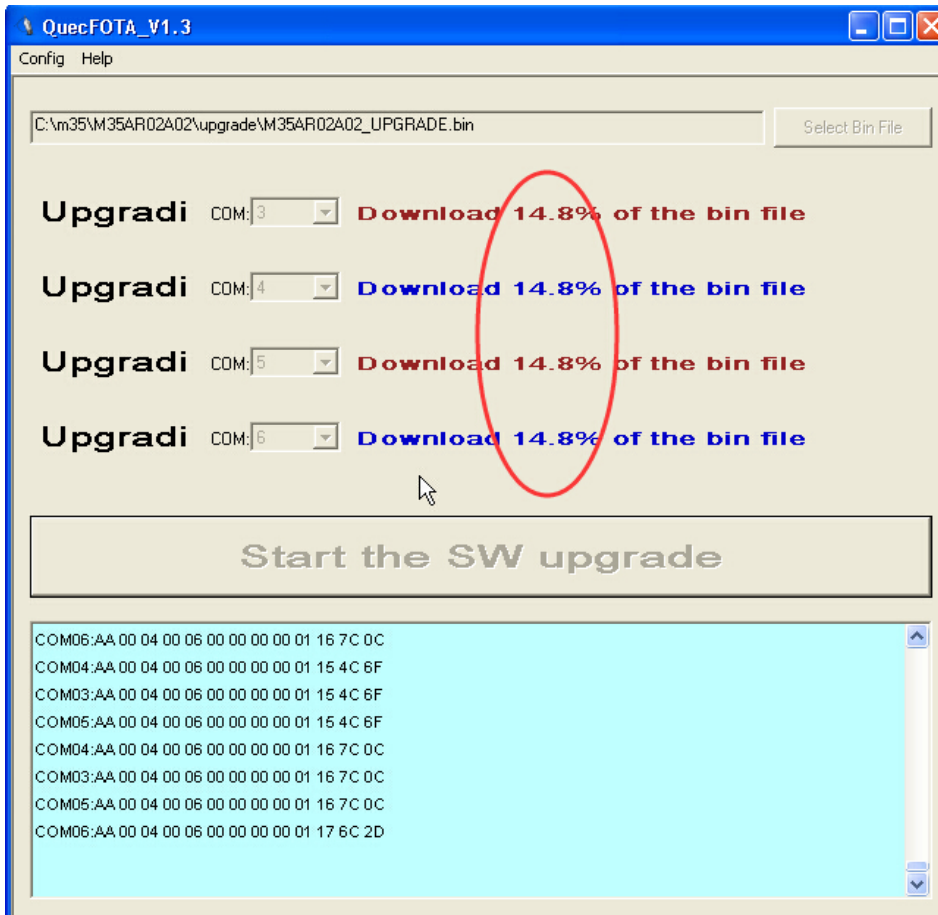
4. Click "Start the SW upgrade" to be ready for flash procedure.



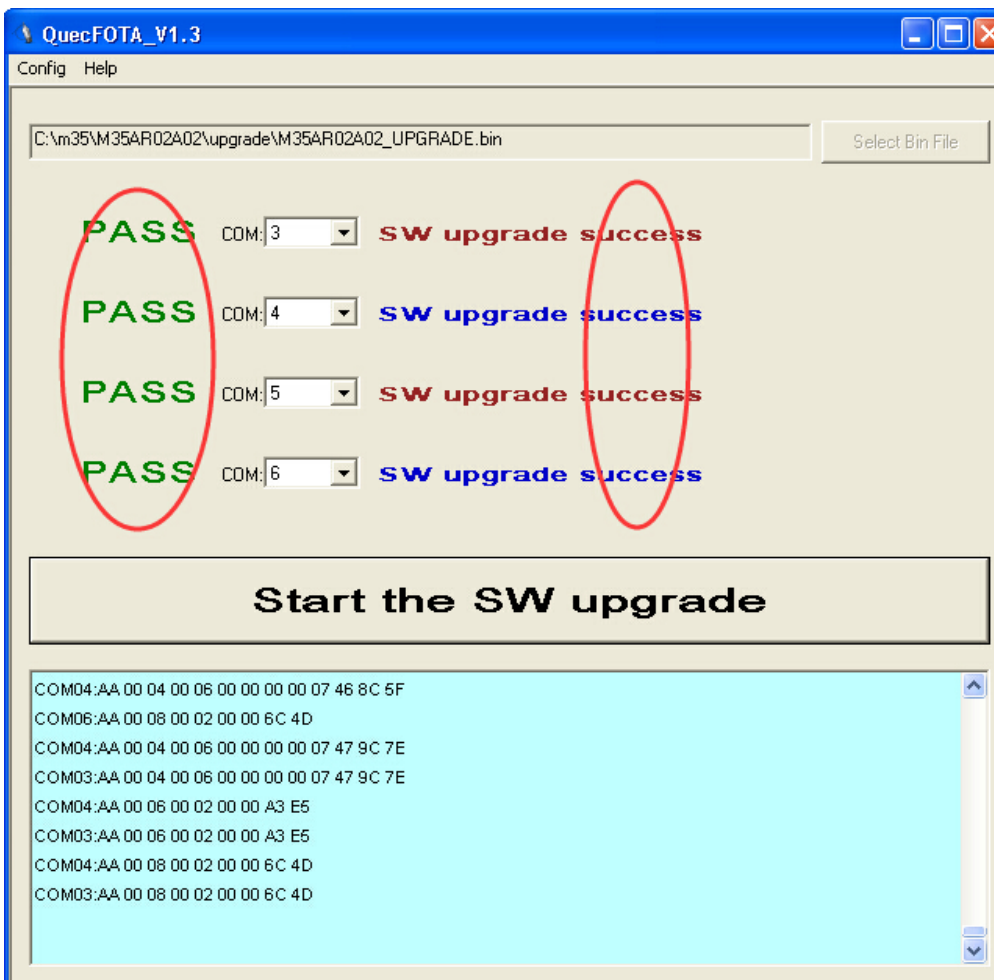
Then click "Power Off Remote GSM Modules" and "Power On Remote GSM Modules" to activate the flash tool.



Now you can see the flash procedure is in full swing.



Once it reaches 100%, you will see following picture which means flashing successfully.



5. Click "Leave Remote COM" to bring gateway back to work.

Remote COM Mode

Power Down No Pulse:	<input type="radio"/> No <input checked="" type="radio"/> Yes
Entry Remote COM:	<input type="button" value="Entry Remote COM"/>
Leave Remote COM:	<input type="button" value="Leave Remote COM"/> ←
Power for Modules:	<input type="button" value="Power On"/> <input type="button" value="Power Off"/>

6. Confirm the result:

VoxStack WIRELESS GATEWAY

SYSTEM | **GSM** | SIP | ROUTING | SMS | NETWORK | ADVANCED | LOGS

GSM Settings | Advanced | Call Forwarding | Call Waiting | DTMF | BCH | **toolkit**

Free Communication OpenVox Solution

Function: **Send AT Command**

Action: **AT+CGMR** Copy to Selected Clear All **Execute**

Port	Input	Output
<input checked="" type="checkbox"/> gsm-1.1	AT+CGMR	
<input checked="" type="checkbox"/> gsm-1.2	AT+CGMR	
<input checked="" type="checkbox"/> gsm-1.3	AT+CGMR	
<input checked="" type="checkbox"/> gsm-1.4	AT+CGMR	
<input checked="" type="checkbox"/> gsm-2.1	AT+CGMR	
<input checked="" type="checkbox"/> gsm-2.2	AT+CGMR	
<input checked="" type="checkbox"/> gsm-2.3	AT+CGMR	

Free Communication

Function: Send AT Command

Action: AT+CGMR Copy to Selected Clear All Execute

Port	Input	Output
<input type="checkbox"/> gsm-1.1	AT+CGMR	Revision: M35AR02A02 ← New version OK
<input type="checkbox"/> gsm-1.2	AT+CGMR	Revision: M35AR02A02 OK
<input type="checkbox"/> gsm-1.3	AT+CGMR	Revision: M35AR02A02 OK
<input type="checkbox"/> gsm-1.4	AT+CGMR	Revision: M35AR02A02 OK
<input type="checkbox"/> gsm-2.1	AT+CGMR	Revision: M35AR01A22 ← old version OK
<input type="checkbox"/> gsm-2.2	AT+CGMR	Revision: M35AR01A22

IF M35F, it will show Revision: M35FAR01A08

Warning:

All steps above MUST be carried on under windows XP or windows 7 32bit system.