

GSM Module Upgrading Manual

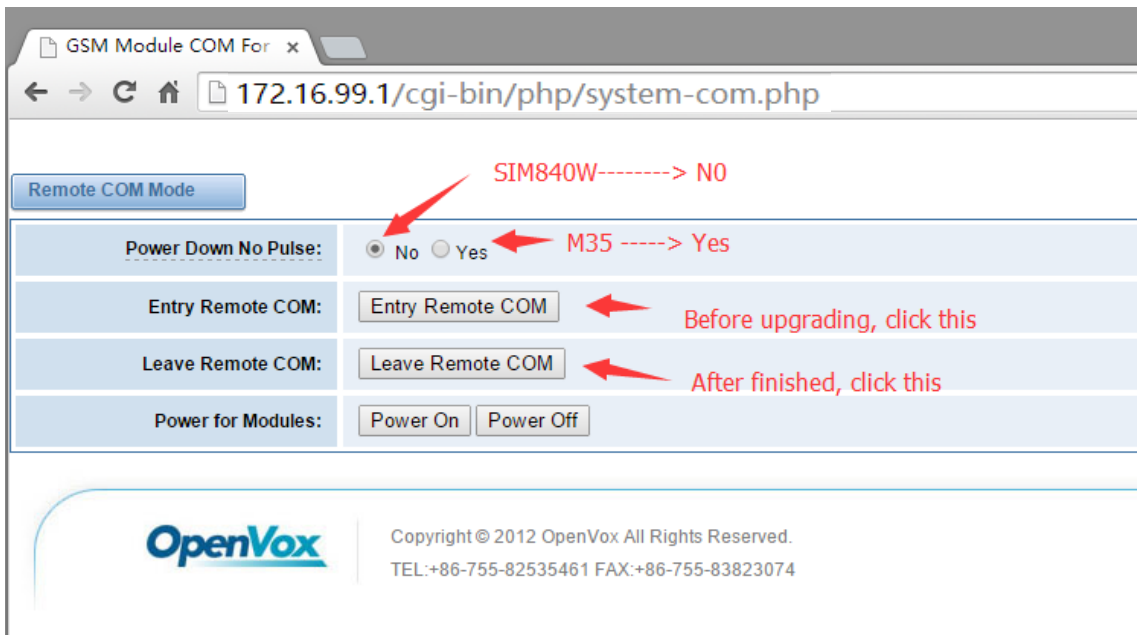
1. Steup RemoteCom mode:

Default IP: 172.16.99.1

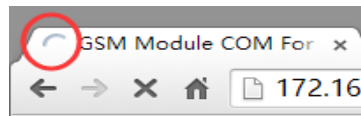
Username: admin

Password : admin

Versions	Modules	IP Address
VS-GW1200-4G	1 * 4G	172.16.99.1
VS-GW1600-8G	2 * 4G	172.16.99.1-2
VS-GW1600-12G	3 * 4G	172.16.99.1-3
VS-GW1600-16G	4 * 4G	172.16.99.1-4
VS-GW1600-20G	5 * 4G	172.16.99.1-5

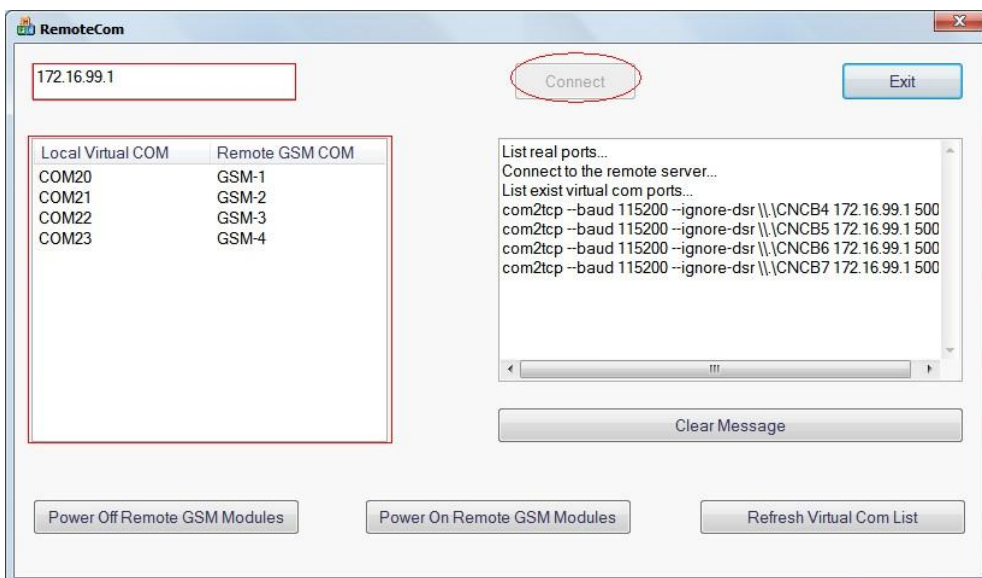


Click "Entry Remote COM" to activate Flashing Mode, you will see there is a circle running, once it is stopped, means RemoteCom is ready.

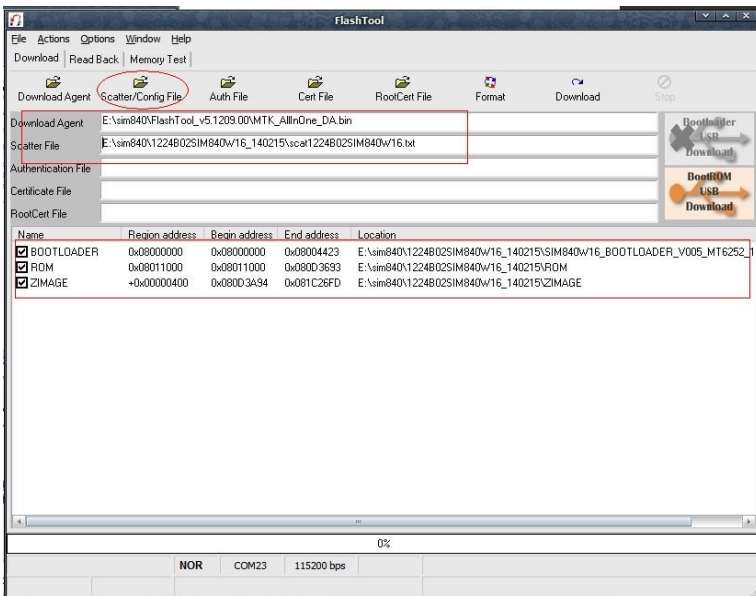
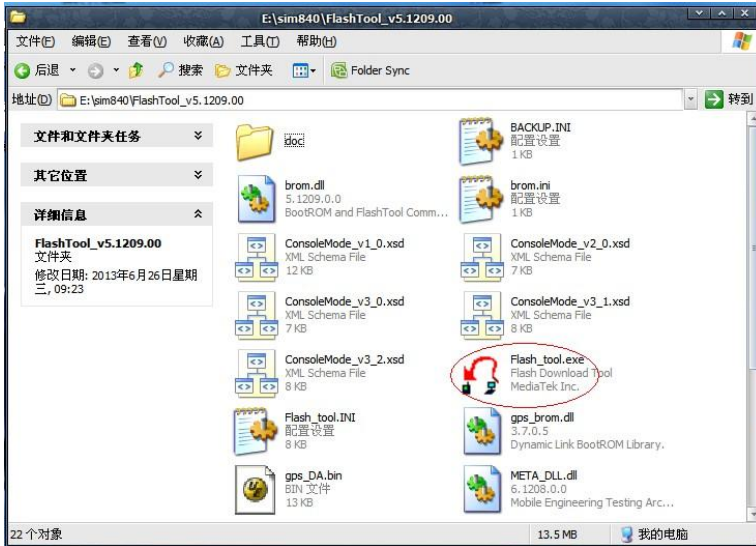


2.Run RemoteCom and connect Gateway:

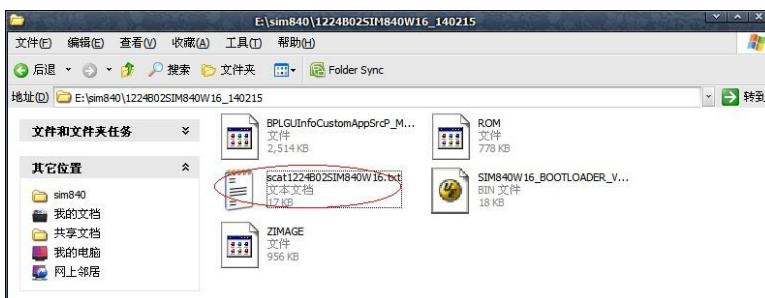
Fill in IP of gateway and click "Connect", then waiting for COM list shows up:



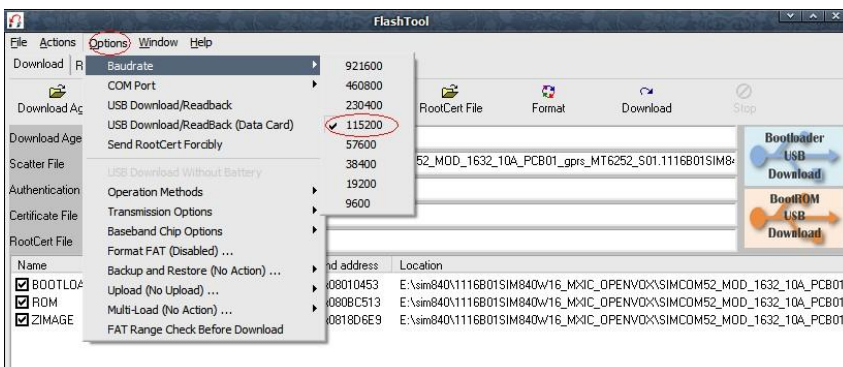
3.Run Flash_tool

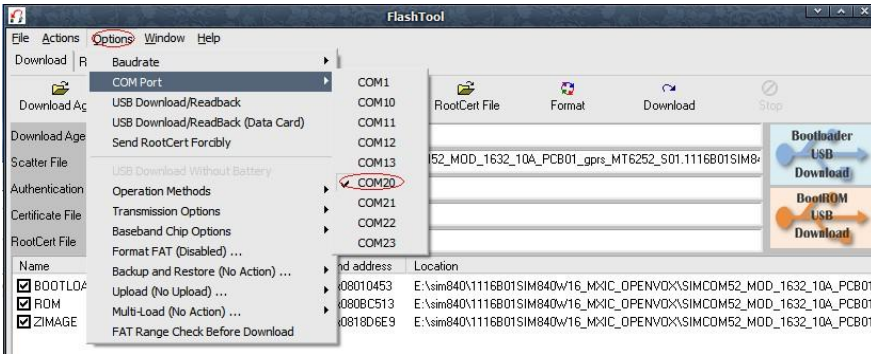
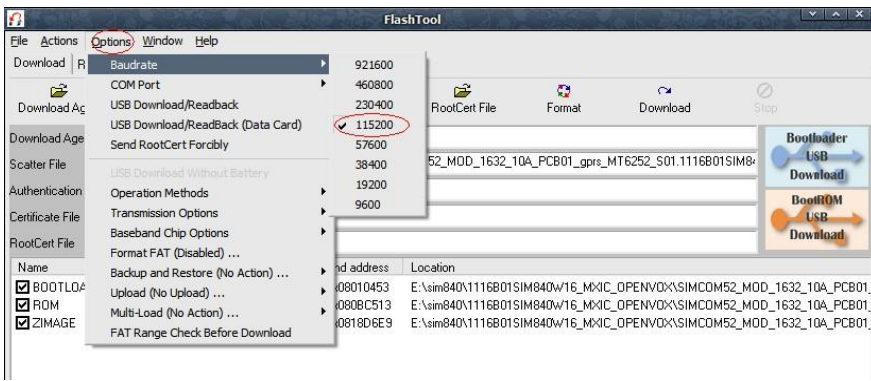


Click "Scater/Config File" and choose the following file "scat1224B02SIM840W16.txt", then you will see the window looks like above.

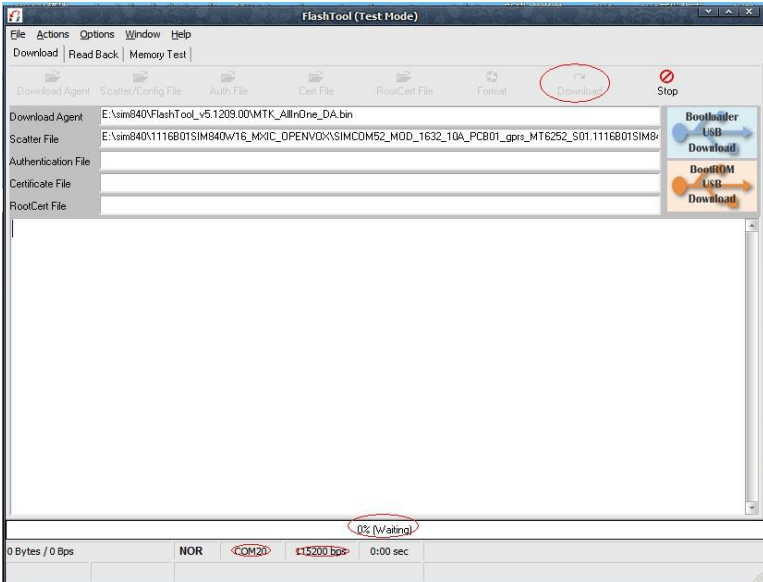


Then choose baudrate "115200" and COM port "20":

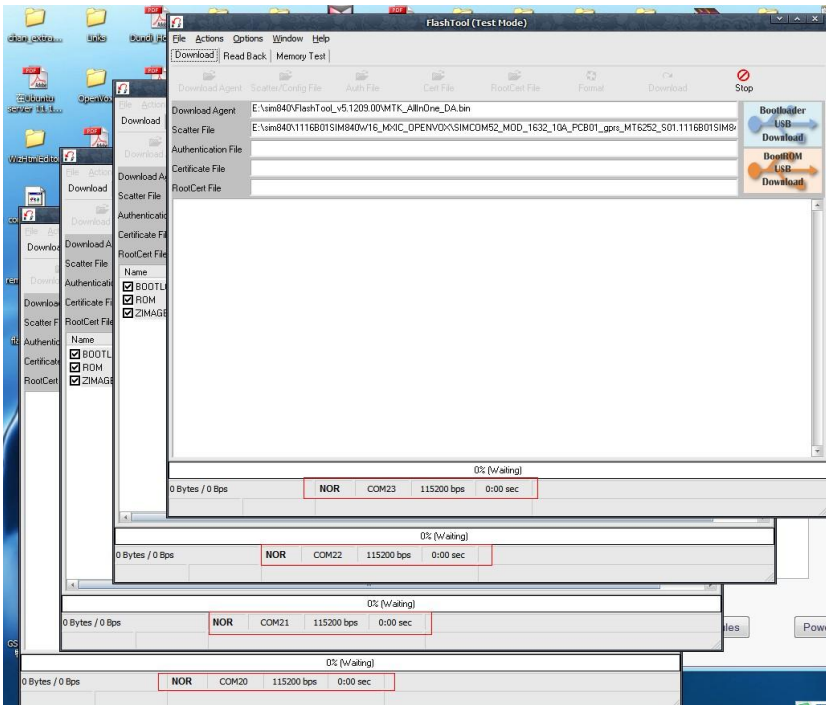




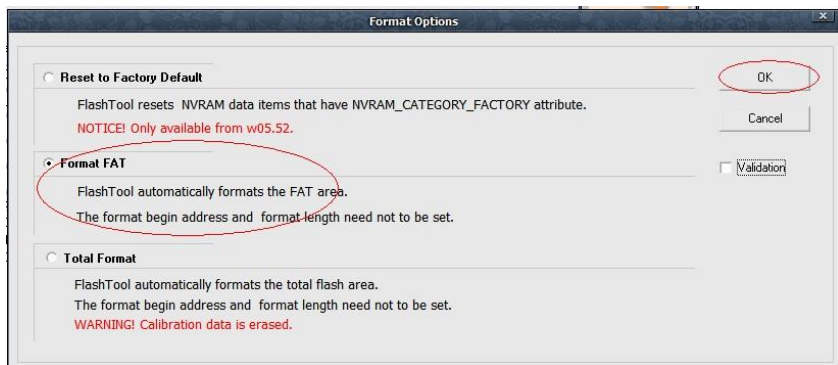
Click "Download" to be ready for writing new firmware to GSM-1 module:



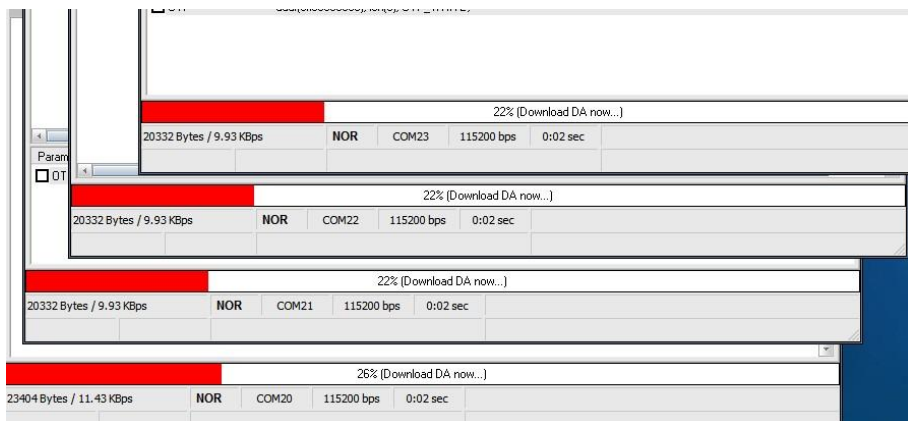
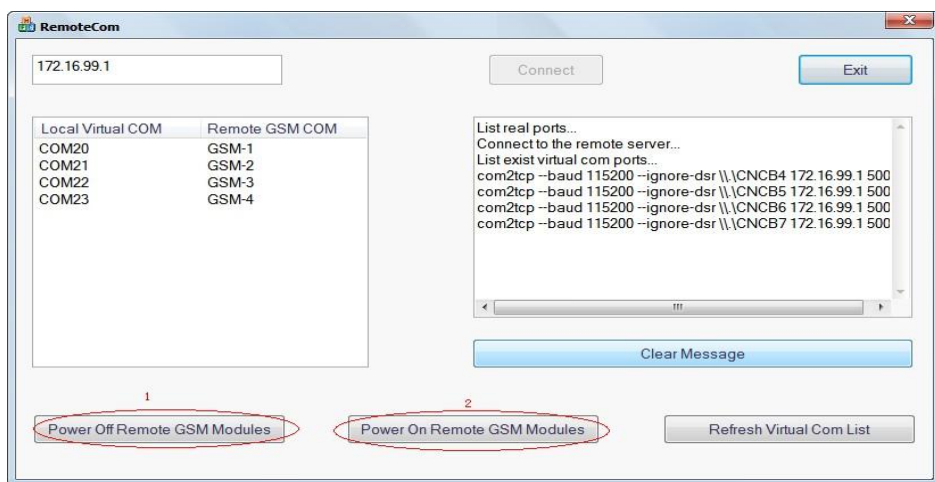
Follow the same steps above to open other 3 Flash_tool windows to upgrade GSM-2, GSM-3 and GSM-4:



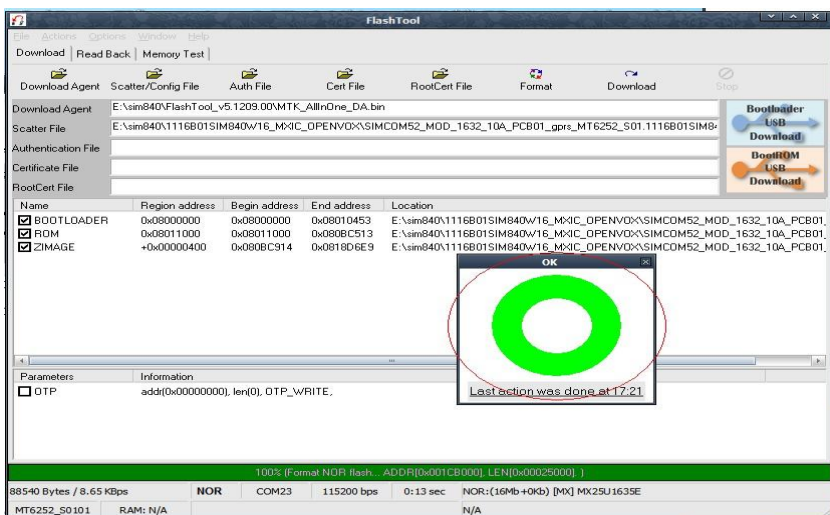
Click "Format" and leave the settings as below



After click "OK", the format process is ready, apply the steps to all 4 Flash_tool windows. Then power off and power on the GSM Modules to active format process:



After Format process finished, you will see the window as below. You need to reboot the gateway to finished upgrading GSM Modules.



5. Confirmation

The screenshot shows the VoxStack GSM Gateway web interface. The navigation menu includes SYSTEM, GSM, SIP, ROUTING, SMS, and NETWORK. The GSM Settings page is active, showing a 'Port gsm-1.1' configuration section. Below this, there is a table of GSM module details:

Name:	
Speaker Volume:	70
Micronhone Volume:	1
SIM IMSI:	460025440209098
GSM Module IMEI:	860041020970367 <input type="button" value="Modify"/>
GSM Module Revision:	Revision:1224B02SIM840W16
Carrier:	CHINA MOBILE
Signal:	19
BER:	0
Status:	READY

Follow the picture above to check current version of firmware on GSM module.

The tag "Revision:1224B02SIM840W16" is the version number of firmware you just upgrade. If not, means upgrading failed.

Notice:

If you have more than 1 GSM board (4 ports), then you need to upgrade those boards one by one, the steps are all the same as above.

Related Files:

RemoteCOM:

http://downloads.openvox.cn/pub/firmwares/GSM%20Gateway/tools/RemoteCom_Setup.zip

Flash tool:

http://downloads.openvox.cn/pub/firmwares/GSM%20Gateway/tools/FlashTool_v5.1209.00.zip

Firmware for GSM modules:

http://downloads.openvox.cn/pub/firmwares/GSM%20Gateway/tools/SIM840W_firmware_current.zip

Latest firmware for VoxStack GSM Gateway:

<http://downloads.openvox.cn/pub/firmwares/GSM%20Gateway/wg400-current.img>

Warning:

The firmware file "SIM840W_firmware_current.zip" must be decompressed under path without SPACES like "E:\myfiles\", if it is "E:\my files\", the files will be broken after unzipped. Please take this note seriously!

All steps above MUST be carried on under windows XP or windows 7 32bit system.